

The Best School in all of Gwinnett, all of Georgia, and all over the world

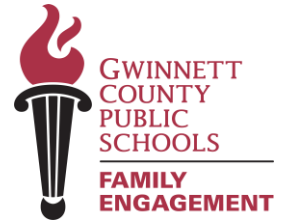
Benefield E.S.

24.25 TITLE I PLANNING MEETING

Date: Wednesday, March 27, 2024

Time: 5:00 p.m. - 6:00 p.m.

School Location: Family Center



Welcome

- *Introductions*

- *Purpose of meeting:*

All families and community members share in the decision-making process. We need your input!

At your school	At the GCPS district level
Local School Plan for Improvement (LSPI)	District Improvement Plan (DIP)
The Plan...Promise...	District Family and Community Engagement Plan
Title I Budget	District Title I Budget

Title I Overview

- Is the largest federal assistance program for schools.
- Provides support to students who are at risk of not meeting the State's academic standards.
- Determines funding by the number of students receiving free or reduced-price lunch.
- Supports parents/families by offering activities and training opportunities to increase engagement in their children's education.

Local School Input Form



FEDERAL PROGRAMS - OFFICE OF FAMILY ENGAGEMENT

LOCAL SCHOOL PLANNING MEETING INPUT FORM 2024 – 2025

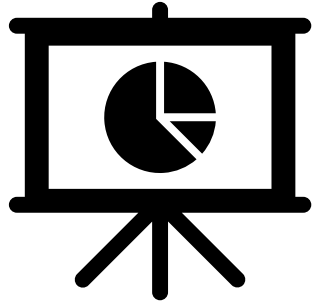
School Name: _____

Date: _____

Please return completed form to: _____

TITLE COMPONENT	DO YOU HAVE SUGGESTIONS FOR CHANGES?		SUGGESTIONS <small>(IF YOU CHECKED YES, PLEASE WRITE YOUR SUGGESTIONS FOR CHANGE IN THIS COLUMN)</small>
	Yes	No	
1. School Goals			
2. The Plan...The Promise...			
3. Budget and Prioritized Wish List			

4. What do you think staff members need to know to better assist you in supporting our child's learning?



DATA AND SCHOOL GOALS

School Profile Dashboard Data



School Data Profile

Mar 05, 2024

Student Demographics

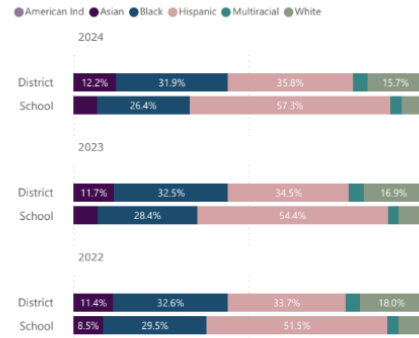
Benefield Elementary School

Demographics	Student Attendance	Teacher Attendance	ACCESS	Discipline	District Assessment	EES Survey	i-Ready / MAP	Milestones	Performance
--------------	--------------------	--------------------	--------	------------	---------------------	------------	---------------	------------	-------------

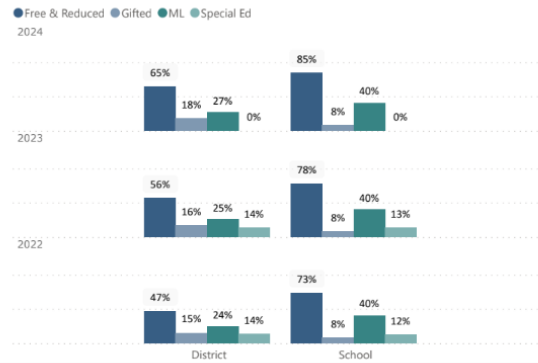
School

Benefield ES

Student Race/Ethnicity



Student Programs



School Year		Enrollment	Amer Ind	Asian	Black	Hispanic	Multiracial	White	Male	Female	Free & Reduced	Gifted	ML	Special Ed
2024	District	184,200	<1%	12.2%	31.9%	35.8%	4.3%	15.7%	51.2%	48.8%	64.8%	17.7%	26.7%	0.0%
	School	1,278	<1%	6.7%	26.4%	57.3%	3.2%	6.0%	49.9%	50.1%	84.6%	8.3%	40.3%	0.0%
2023	District	182,662	<1%	11.7%	32.5%	34.5%	4.2%	16.9%	51.3%	48.7%	56.2%	16.4%	25.4%	13.9%
	School	1,280	<1%	7.0%	28.4%	54.4%	3.2%	7.0%	50.7%	49.3%	77.8%	8.0%	39.8%	13.1%
2022	District	180,537	<1%	11.4%	32.6%	33.7%	4.1%	18.0%	51.2%	48.8%	46.6%	15.1%	24.3%	13.8%
	School	1,217	<1%	8.5%	29.5%	51.5%	3.4%	7.0%	51.1%	48.9%	73.4%	8.1%	40.2%	12.2%



What does the data tell us?

"Say Something" Protocol

Review the data and use the *"Say Something"* sentence starters outlined below to share statements regarding the data. What parts of the data catch your attention?

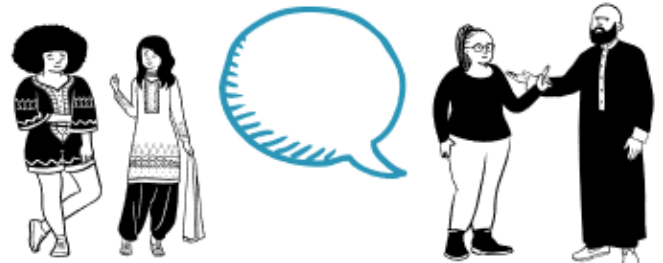
Something I noticed...

Something I wonder about...

Something that puzzles me ...

Something I'm reminded of when I review the data ...

Something I would like to talk more about ...



Educational Effectiveness Survey (EES) – 2022-23 Family Perceptions Results Data



School Data Profile

EES Survey Results

Benefield Elementary School

[Click to change school.](#)

Mar 05, 2024

Demographics	Student Attendance	Teacher Attendance	ACCESS	Discipline	District Assessment	EES Survey	i-Ready / MAP	Milestones	Performance
--------------	--------------------	--------------------	--------	------------	---------------------	------------	---------------	------------	-------------

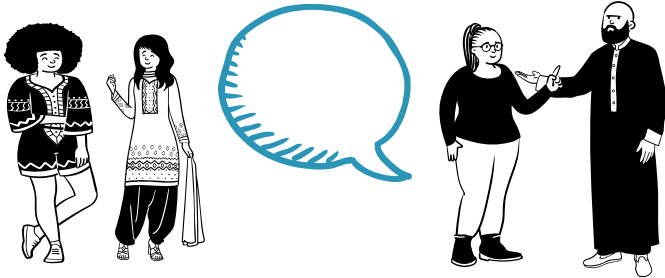
Percent of Families That Responded Positively

	2022-23	
	School	District
Communication		
Communication/materials I receive from the school are in a language I can understand	93.3%	95.2%
I am encouraged to collaborate with my student's teachers about my student's learning	87.3%	74.8%
This school communicates effectively with my family	87.9%	80.1%
This school communicates with me about my student's progress	90.0%	79.6%
Parent & Community Involvement		
I feel welcome at this school	87.1%	84.4%
Parent organizations at this school actively encourage all families to participate	83.8%	78.7%
Parents/families have input into plans for improving this school	74.4%	69.1%
Parents/families participate in important decisions about their student's education	85.3%	73.9%
There is a high level of community support for this school	85.7%	78.6%
This school respects the different cultures represented in our community	91.8%	87.1%
This school tells me how I can help my student with homework	83.7%	65.9%
When I share concerns with my student's teacher, they listen	94.2%	84.4%

Educational Effectiveness Survey (EES) Results Data

Turn and Talk:

- *What do you notice?*
- What were the results of the 2022-23 year's survey?
- How can we use this information?



Local School Plan for Improvement (LSPI)- What are our School's Goals and How do we plan to accomplish our goals ?

Strategic Priority & Goal Focus #1: Empathy

At Benefield, we desire for each and every student and their families to feel a sense of belonging. Benefield Elementary School is committed to ensuring that all students and staff maintain a work/school life balance. At Benefield we encourage everyone to work hard but take time to relax and rejuvenate.

Action Step 1:

- ↑ Continue to provide wellness opportunities will be created where teachers can find time and ways to relax and unwind. Numerous opportunities for appreciation will be provided on a monthly basis for all Benefield staff members.

Action Step 2:

- ↑ Students who have chronic absenteeism will be monitored and rewarded for consistent attendance. Recognition of classes with improved student attendance. improvement.

Student Support Activities – Attendance Incentive, Titan of the Week, and Wellness Center

Local School Plan for Improvement (LSPI)- What are our School's Goals and How do we plan to accomplish our goals ?

Strategic Priority & Goal Focus #2: Equity

To ensure we are leading with excellence and considering each and every student. J.W. Benefield Elementary School will continuously work to create an environment where all students are learning at high levels and understanding how to conduct themselves in a civil society. We will support all students in the areas of academic press and supportive community through school wide programs that will ensure students are engaged in academic and social emotional growth.

Action Step 1:

↑ Provide additional Extended Learning Time (ELT) for students not meeting proficiency in English Language Arts & Mathematics.

Action Step 2:

↑ Increase the number for English of Students of Other Languages (ESOL) and gifted trained and certified teachers.

Family Engagement Activities: Provide parent workshops, English Classes, and opportunities for parents to collaborate with teachers and each other to create a supportive community and increase academic achievement.

Local School Plan for Improvement (LSPI)- What are our School's Goals and How do we plan to accomplish our goals ?

Strategic Priority & Goal Focus #3: Effectiveness

As a school, we will work to ensure each and every student is provided appropriate instructional materials and resources to increase academic achievement.

Action Step 1:

- ↑ Professional Development for teachers in core academic areas to support multilingual learners. Followed by peer observations or Admire and Acquire sessions.

Action Step 2:

- ↑ Quarterly Data Discussions following common unit assessments and Mid-Year Benchmark Assessments that focus on small group mastery of instructional standards.
- ↑ Content related literacy night, data-driven Hidden Figures activities, and Science Fair Night.

Local School Plan for Improvement (LSPI)- What are our School Goals and How do we plan to accomplish our goals ?



APTI: write your LSPI goals and action steps in a family-friendly language.

Strategic Priority & Goal Focus #4: Excellence

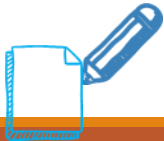
As a school, we will provide opportunities for students to explore post-graduation pathways.

Action Step 1:

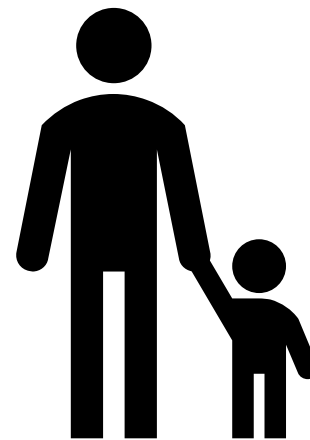
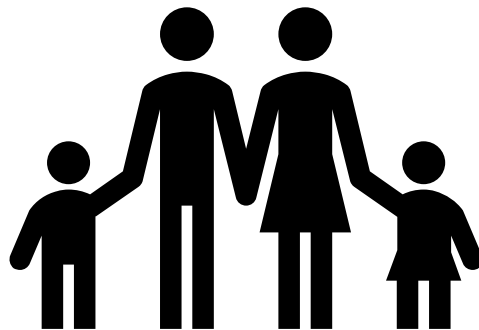
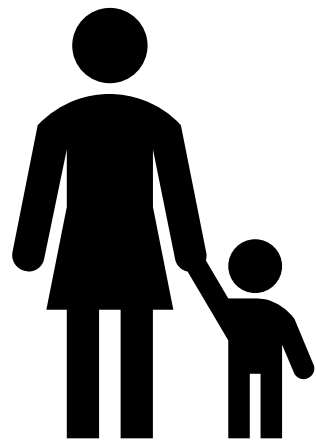
↑ Continue to provide ongoing informational sessions and workshops to increase parental capacity.

Action Step 2:

Continue to offer National Elementary Honor Society, Art Club, Math Club, Video Club, and FLL Robotics, and Career Days to open pathways to various post-secondary and workforce options.



*Families, please add your comments/suggestions to the Local School Planning Meeting Input Form under the section labeled **School Goals.***



Family and Community Engagement Documents

Title I School-Family Plan...The Promise...



BENEFIELD ELEMENTARY SCHOOL THE PLAN... THE PROMISE...

2023-2024



*Titans Shine Together
#teamtitans*

1221 Old Norcross Road
Lawrenceville, GA 30043
770-962-3661

<https://www.gcpsk12.org/BenefieldES>

Principal, Shonda Gipson-Stevens

Drafted on April 25, 2023

WHAT IS A FAMILY AND COMMUNITY ENGAGEMENT PLAN?

It is a plan that describes how our school will provide opportunities to improve family engagement that will support student learning at school and at home. All students and their families are invited and encouraged to fully participate in the opportunities described in this plan. The school will provide information and as many opportunities as possible for the participation of all family members.

WHAT IS A SCHOOL-FAMILY PROMISE?

It is a written agreement that outlines how the school, the students, and the family will work together to ensure your child's academic success. An effective School-Family Promise contains the following elements:

- Clear learning goals that are linked to the school's improvement plan
- Specific skills students will learn during the year
- Strategies that staff, families, and students will use to improve student learning
- Ways to extend learning at home
- Methods teachers and family members will use to communicate about student progress
- Opportunities for family members to observe and participate in the classroom
- Jointly developed by families, school staff, students, community business partners, and other stakeholders during our Planning Meeting
- FACE is reviewed and revised during the Title I Annual Planning Meeting. A draft of the updated Plan is available for additional input during the document review period. Benefield will communicate with parents in a family-friendly format through a variety of methods and media including but not limited to: Parent meetings and workshops, Parent-Teacher Conferences, Parent/Student/ Teacher Connections,

monthly Parent Newsletters, phone calls, emails, the school webpage and the Parent Center.

LET'S TALK

Methods of Teacher Family connections include virtual meetings, telephone calls, and newsletters. *If you need interpretation and/or translation services, please contact:*

Xandria.Mcbride@gcpsk12.org

Ana.C.Morales@gcpsk12.org

ACTIVITIES TO BUILD OUR PARTNERSHIP

Family Community and Engagement Tentative Activities:

Meet the Teacher - 1st Semester

Literacy/Math Night- 2nd Semester

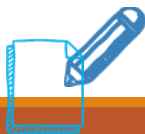
STEAM Night – 2nd Semester

Kindergarten Transition Workshop - 2nd Semester

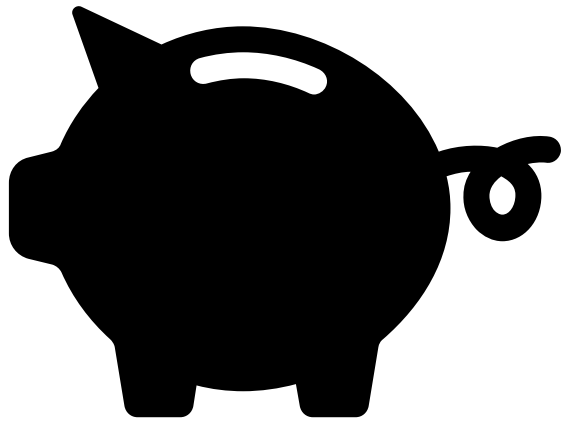
Early Release Schedule/ Parent Teacher Conference - Fall and Spring

GMAS Testing Parent Meetings – 1st and 2nd Semester

Family Workshops – Fall and Spring



*Please add your comments/suggestions to the Local School Planning Meeting Input Form under the section labeled **The Plan...**
The Promise.*

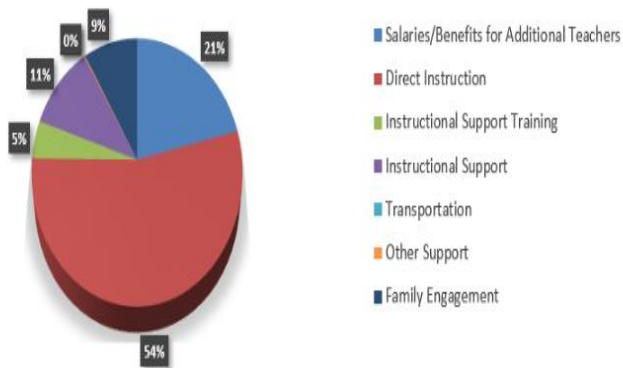


Budget

Our School's Title I Budget and Prioritized Wish List

BENEFIELD ES TITLE I BUDGET SUMMARY 2023 - 2024

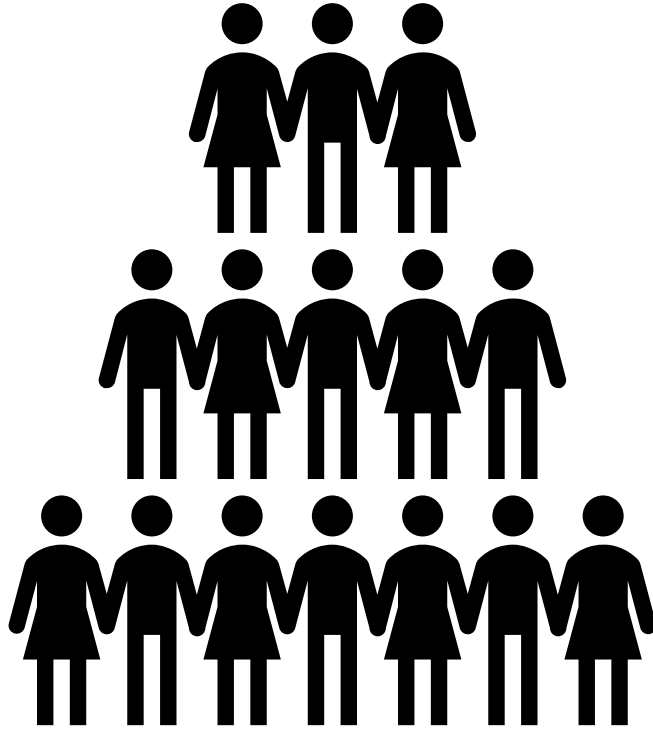
Allocation of Title I Funds



*Families, please add your
comments/suggestions to the Local School
Planning Meeting Input Form under the
section labeled **Budget and Prioritized
Wish List***

Budget Category	Amount	Percent of Budget	Use of Funds
Salaries/Benefits for Additional Teachers	\$144,623	21.46%	
Direct Instruction	\$361,770	53.69%	
Instructional Support Training	\$31,368	4.66%	
Instructional Support	\$74,305	11.03%	
Transportation	\$0	0.00%	
Other Support	\$1,158	0.17%	
Family Engagement	\$60,600	8.99%	
TOTAL ALLOCATION	\$673,824	100%	





Staff Training

Building School Staff Capacity - We Need Your Input

Families, what do you think staff members need to know to better assist you in supporting your child's learning?



*Families, please add your comments/suggestions to the Local School
Planning Meeting Input Form*



GCPS

District Input

GCPS District Input Form



FEDERAL PROGRAMS – OFFICE OF FAMILY ENGAGEMENT

DISTRICT PLANNING MEETING INPUT FORM 2024 - 2025

School Name: _____

Date: _____

Please return completed form to: _____

TITLE / COMPONENT	DO YOU HAVE SUGGESTIONS FOR CHANGES?		SUGGESTIONS <small>(IF YOU CHECKED YES, PLEASE WRITE YOUR SUGGESTIONS FOR CHANGE IN THIS COLUMN)</small>
	Yes	No	
1. GCPS Family and Community Engagement Plan			
2. 1% Set-Aside for Family Engagement Activities			

GCPS Blueprint for the Future



GCPS Blueprint for the Future – Strategic Plan Summary 2023-2027



Strategic Priority #1: Empathy

Empathy, the ability to understand the feelings of another person and place yourself in their position, is the entry point towards creating a culture where staff and students feel a sense of belonging and safety.

Goal 1.A—Cultural competence.

Increase the cultural competence and proficiency of our organization and individual staff members to improve service delivery, strengthen programs, and enhance engagement across the full spectrum of our diverse community.

Goal 1.B—Staff and student wellbeing.

Promote student and staff wellbeing through prioritizing self-care, physical and mental health, and social emotional learning.

Goal 1.C—Educator diversity.

Develop robust pipelines and support systems to recruit and retain an educator workforce that reflects the diversity of our students and community.

GCPS Blueprint for the Future – Strategic Plan Summary 2023-2027



Strategic Priority #2: Equity

Board Policy BAAE - Educational Equity charged district administration to “design or redesign systemic programs and initiatives to address and reduce educational inequity, providing students and staff with targeted supports and enrichment that increase opportunities to succeed.”

Goal 2.A—Multi-tiered system of supports.

Implement a comprehensive framework to fully operationalize a multi-tiered system of supports to address academic and non-academic student needs and remove barriers to success.

Goal 2.B—Opportunity and access.

Expand student opportunities to engage in and access high-quality, rigorous, and culturally relevant curriculum, advanced coursework (e.g., Advanced Placement and dual enrollment), and enrichment activities (e.g., the arts, gifted, STEM, career technical education).

Goal 2.C—Equitable resource allocation.

Overhaul resource allocation systems and processes to ensure that each school’s instructional, social emotional, and behavior supports match the unique student and community needs.

GCPS Blueprint for the Future – Strategic Plan Summary 2023-2027



Strategic Priority #3: Effectiveness

Every system is perfectly designed to get the results that it gets. – W. Edwards Deming
This well-known adage is so simple yet profound. In this new era, the district's challenge is to sustain the legacy of excellent performance while responding to the diverse needs of a growing community.

Goal 3.A—Results-Based Evaluation System.

Redefine the inputs, behaviors, and outcomes that determine the standards for student success as measured by the Results-Based Evaluation System (RBES) to support school improvement and student growth.

Goal 3.B—Talent management.

Transform human resources function into a strategic talent management organization that supports educators and staff to achieve district goals.

Goal 3.C—Educational return on investment.

Measure and report educational return on investment to inform budget and resource allocation decisions and drive continuous improvement.

GCPS Blueprint for the Future – Strategic Plan Summary 2023-2027



Strategic Priority #4: Excellence

Excellence is not optional. To achieve the GCPS mission and vision, excellence is the standard. This strategic priority continues a long-standing ethos in the district to be a world-class organization in service to students and families.

Goal 4.A—Preferred education destination.

Be the first choice of students and families for excellent schools and the employer of choice for educators and staff to fulfill their careers.

Goal 4.B—Post-secondary and workforce readiness.

Prepare each and every student for postsecondary and workforce readiness so that they have multiple pathways to success based on their demonstrated knowledge, skills, abilities, and interests.

Goal 4.C—World-class communication and engagement.

Demonstrate world-class communication and engagement through modeling the value GCPS leadership places on transparent, two-way communication to build stakeholder trust and confidence.

GCPS Family and Community Engagement Plan



- [GCPS Family and Community Engagement Plan Video \(English\)](#)
- [GCPS Family and Community Engagement Plan Video \(Spanish\)](#)
- [GCPS Family and Community Engagement Plan \(Written Document\)](#)

Family and Community Engagement Plan



Let's Partner Together to Support Students and Families!

Family and Community Engagement Plan 2023-2024

While your student may receive instruction during the school day, we know that a child's first and most important teachers are parents and family members. We know you play an integral role in the education of your child, and we want to encourage and support you to be actively involved in your child's school. We need your input, your suggestions, and your perspective to make decisions about your child's school experience. Additionally, our district receives Title I, Part A funds. Title I, Part A supplemental funds are used to enhance the educational program to meet the needs of each and every child. We use these funds to hire additional teachers in our Title I schools, to purchase technology and resources, and to train school personnel who serve as ambassadors for families and the school community.

GCPS District Input Form



FEDERAL PROGRAMS – OFFICE OF FAMILY ENGAGEMENT

**DISTRICT PLANNING MEETING
INPUT FORM
2024 - 2025**

School Name: _____

Date: _____

Please return completed form to: _____

TITLE I COMPONENT	DO YOU HAVE SUGGESTIONS FOR CHANGES?		SUGGESTIONS <i>(If you checked yes, please write your suggestions for change in this column)</i>
	Yes	No	
1. GCPS Family and Community Engagement Plan			
2. 1% Set-Aside for Family Engagement Activities			

GCPS Family and Community Engagement Plan



- Work with families, parents, teachers, school staff and community members to develop a Family and Community Engagement Plan.
- Office of Federal Programs provides support to all Title I schools.
- Survey families for content and effectiveness of Family and Community Engagement Plan.
- Collaborate with federal, state and local programs.
- Building Capacity of Parents
- Building Capacity of School Staff



Families, please add your comments/suggestions to the District Planning Meeting Input Form

1% Family Engagement Set-aside



Title I Family Engagement Budget:

- 1% of the GCPS Title I budget supports family engagement and is equally divided to all Title I schools to partially fund a Parent Instructional Coordinator and/or a Parent Outreach Liaison and/or to fund family engagement at schools.
- Other suggestions?



Families, please add your comments/suggestions to the District Planning Meeting Input Form

Save the Date!

Title I Document Review Period



Thursday, March 28 – Monday, April 8, 2024

[Benefield Homepage](#)

*Families, please share this information with other families you know who were unable to attend the Title I Planning Meeting.
We need their input!*

We value your input!

AP will insert the following information here:

- What other opportunities do families have to provide input regarding Title I components?
- What will our school do with the input provided?

